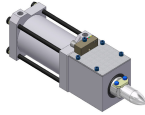




INLINE PIN MOUNTING SHOT PIN SELECTION

UR3



- Stroke: 25mm & 50mm
- Max side load on ram: 50 lbs.
- Standard Integral switch
- Actuator
 - Pneumatic: 70mm bore compact
- Single NAAMS locating pin
- 4 Way Locators only

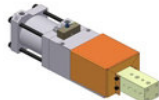
UB4



- Stroke: 25mm, 50mm & 75mm
- Max side load on ram: 100 lbs.
- Standard Integral switch
- Actuator
 - Pneumatic 70mm bore
- Single NAAMS locating pin

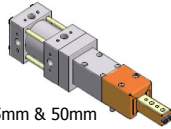
OFFSET PIN MOUNTING SHOT PIN SELECTION

UB4



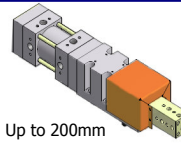
- Stroke: 25mm, 50mm & 75mm
- Max side load on ram: 100 lbs.
- Max offset: 150mm
- Standard Integral switch
- Actuator
 - Pneumatic: 70mm bore
- Multiple locating device capable
 - Pins, backups

WP2



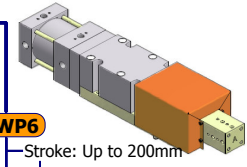
- Stroke: 25mm & 50mm
- Max side load on ram: 50 lbs.
- Max offset: 100mm
- Switch ready
- Actuator
 - Pneumatic Compact: 50mm bore
 - Pneumatic: 63mm bore
- Single locating device only
 - Pin <25mm

WP4



- Stroke: Up to 200mm
 - In 25mm increments
- Max side load on ram: 100 lbs.
- Max offset: 150mm
- Switch ready
- Actuator
 - Pneumatic Compact: 63mm bore
 - Pneumatic: 63mm bore
 - Hydraulic: 40mm bore
- Multiple locating device capable
 - Pins, backups

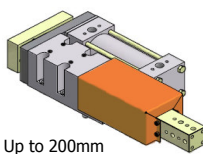
WP6



- Stroke: Up to 200mm
 - In 25mm increments
- Max side load on ram: 250 lbs.
- Max offset: 200mm
- Switch ready
- Actuator
 - Pneumatic: 100mm bore
 - Pneumatic Compact: 100mm bore
 - Hydraulic: 80mm bore
- Multiple locating device capable
 - Pins, backups

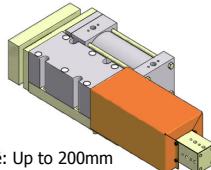
OFFSET PIN MOUNTING SIDE BY SIDE SHOT PIN SELECTION

SB4



- Stroke: Up to 200mm
 - In 25mm increments
- Max side load on ram: 100 lbs.
- Max offset: 150mm
- Switch ready
- Actuator
 - Pneumatic: 63mm bore
- Multiple locating device capable
 - Pins, backups

SB6



- Stroke: Up to 200mm
 - In 25mm increments
- Max side load on ram: 250 lbs.
- Max offset: 200mm
- Switch ready
- Actuator
 - Pneumatic: 100mm bore
- Multiple locating device capable
 - Pins, backups