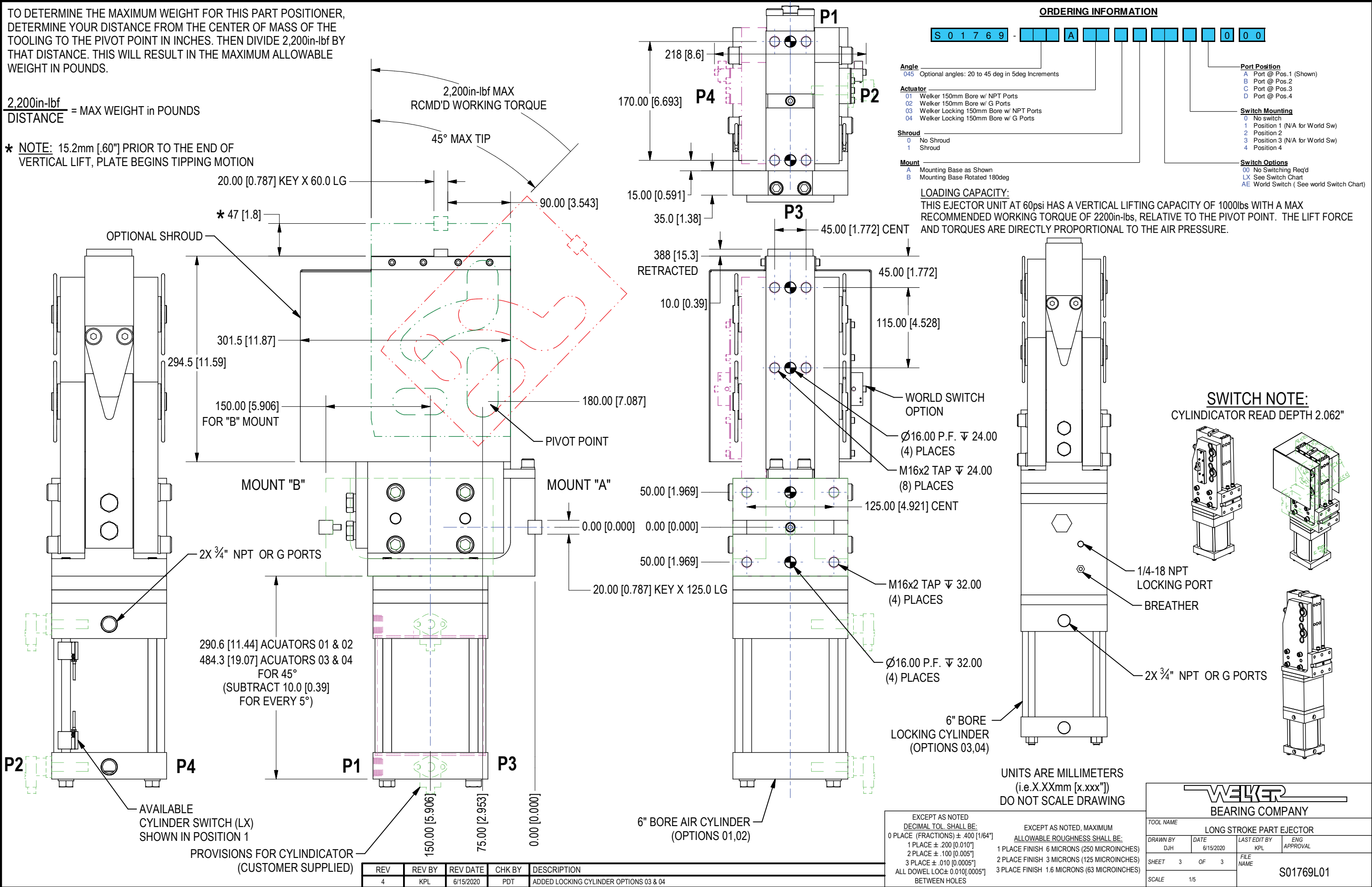


TO DETERMINE THE MAXIMUM WEIGHT FOR THIS PART POSITIONER, DETERMINE YOUR DISTANCE FROM THE CENTER OF MASS OF THE TOOLING TO THE PIVOT POINT IN INCHES. THEN DIVIDE 2,200in-lbf BY THAT DISTANCE. THIS WILL RESULT IN THE MAXIMUM ALLOWABLE WEIGHT IN POUNDS.

$$\frac{2,200\text{in-lbf}}{\text{DISTANCE}} = \text{MAX WEIGHT in POUNDS}$$

* NOTE: 15.2mm [.60"] PRIOR TO THE END OF VERTICAL LIFT, PLATE BEGINS TIPPING MOTION



ORDERING INFORMATION

S 0 1 7 6 9 - A

Angle
045 Optional angles: 20 to 45 deg in 5deg increments

- Actuator
01 Welker 150mm Bore w/ NPT Ports
02 Welker 150mm Bore w/ G Ports
03 Welker Locking 150mm Bore w/ NPT Ports
04 Welker Locking 150mm Bore w/ G Ports

- Shroud
0 No Shroud
1 Shroud

- Mount
A Mounting Base as Shown
B Mounting Base Rotated 180deg

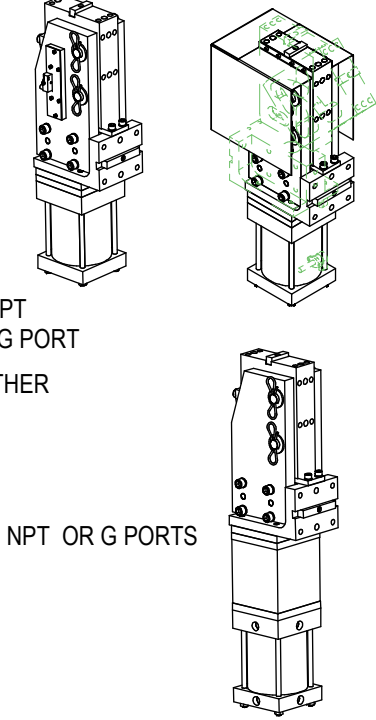
- Port Position
A Port @ Pos.1 (Shown)
B Port @ Pos.2
C Port @ Pos.3
D Port @ Pos.4

- Switch Mounting
0 No switch
1 Position 1 (N/A for World Sw)
2 Position 2
3 Position 3 (N/A for World Sw)
4 Position 4

- Switch Options
00 No Switching Req'd
LX See Switch Chart
AE World Switch (See world Switch Chart)

LOADING CAPACITY:
THIS EJECTOR UNIT AT 60psi HAS A VERTICAL LIFTING CAPACITY OF 1000lbs WITH A MAX RECOMMENDED WORKING TORQUE OF 2200in-lbs, RELATIVE TO THE PIVOT POINT. THE LIFT FORCE AND TORQUES ARE DIRECTLY PROPORTIONAL TO THE AIR PRESSURE.

SWITCH NOTE:
CYLINDRATOR READ DEPTH 2.062"



UNITS ARE MILLIMETERS
(i.e.X.XXmm [x.xxx"])
DO NOT SCALE DRAWING

EXCEPT AS NOTED
DECIMAL TOL SHALL BE:
0 PLACE (FRACTIONS) ± .400 [1/64"]
1 PLACE ± .200 [0.010"]
2 PLACE ± .100 [0.005"]
3 PLACE ± .010 [0.0005"]
ALL DOWEL LOC ± 0.010 [0.0005"]
BETWEEN HOLES

EXCEPT AS NOTED, MAXIMUM
ALLOWABLE ROUGHNESS SHALL BE:
1 PLACE FINISH 6 MICRONS (250 MICROINCHES)
2 PLACE FINISH 3 MICRONS (125 MICROINCHES)
3 PLACE FINISH 1.6 MICRONS (63 MICROINCHES)

REV	REV BY	REV DATE	CHK BY	DESCRIPTION
4	KPL	6/15/2020	PDT	ADDED LOCKING CYLINDER OPTIONS 03 & 04

		TOOL NAME	LONG STROKE PART EJECTOR	
DRAWN BY	DATE	LAST EDIT BY	ENG APPROVAL	
DJH	6/15/2020	KPL		
SHEET	3 OF 3	FILE NAME	S01769L01	
SCALE		1/5		

Order Number SO1 (E)XTEND or SO1 (R)ETRACT		Part Number	Manufacturer	Description All switches are Quick Disconnect
World Switches	99	Switch Ready		Customer Supplied Switch. Prepared for switches below:
	AE or AR	Ni2-Q6.5-AP6-0.1-FS 4.4X3/S304	Turck	4-Wire, 4-Pin, DC M12 X 1 (PNP)
	BE or BR	Ni2-Q6.5-ADZ32-0.1-FSB 5.4X4/S304	Turck	4-Wire, 5-Pin, AC/DC 1/2-20 (N.O.)
	CE or CR	Ni2-Q6.5-AN6-0.1-FS 4.4X3/S304	Turck	4-Wire, 4-Pin, DC M12 X 1 (NPN)
	DE or DR	NBN2-F581-100S6-E8-V1	Pepperl & Fuchs	4-Wire, 4-Pin, DC M12 X 1 (PNP)
	EE or ER	BES-Z02KR2-PSC20F-P100-S04-V	Balluff	3-Wire, 4-Pin, DC M12 X 1 (PNP)
	HE or HR	Ni2-Q6.5-0.1-BDS-2AP6X3-H1141/S34	Turck	4-Wire, 4-Pin, DC M12 X 1 (PNP)
	JE or JR	IN5374	Efector	3-Wire, 4-Pin, DC M12 X 1 (PNP)
	ZE or ZR	WWS001A	Welker	4-Wire, 4-Pin, DC M12 X 1 (PNP)
Order Number	Part Number	Manufacturer	Description	
Cylinder Switches	L3	SWITCH L3 ~ Weld field immune, comparable to World Switches	Welker	4-Wire, 4-Pin, DC M12 X 1 (PNP)
	L5	MK5113 (single sensor switch: 2 switches are installed per cylinder)	ifm Efector	3-Wire, 4-Pin, DC M12 X 1 (NPN)

Standard Switch Option - All other options may affect price and delivery