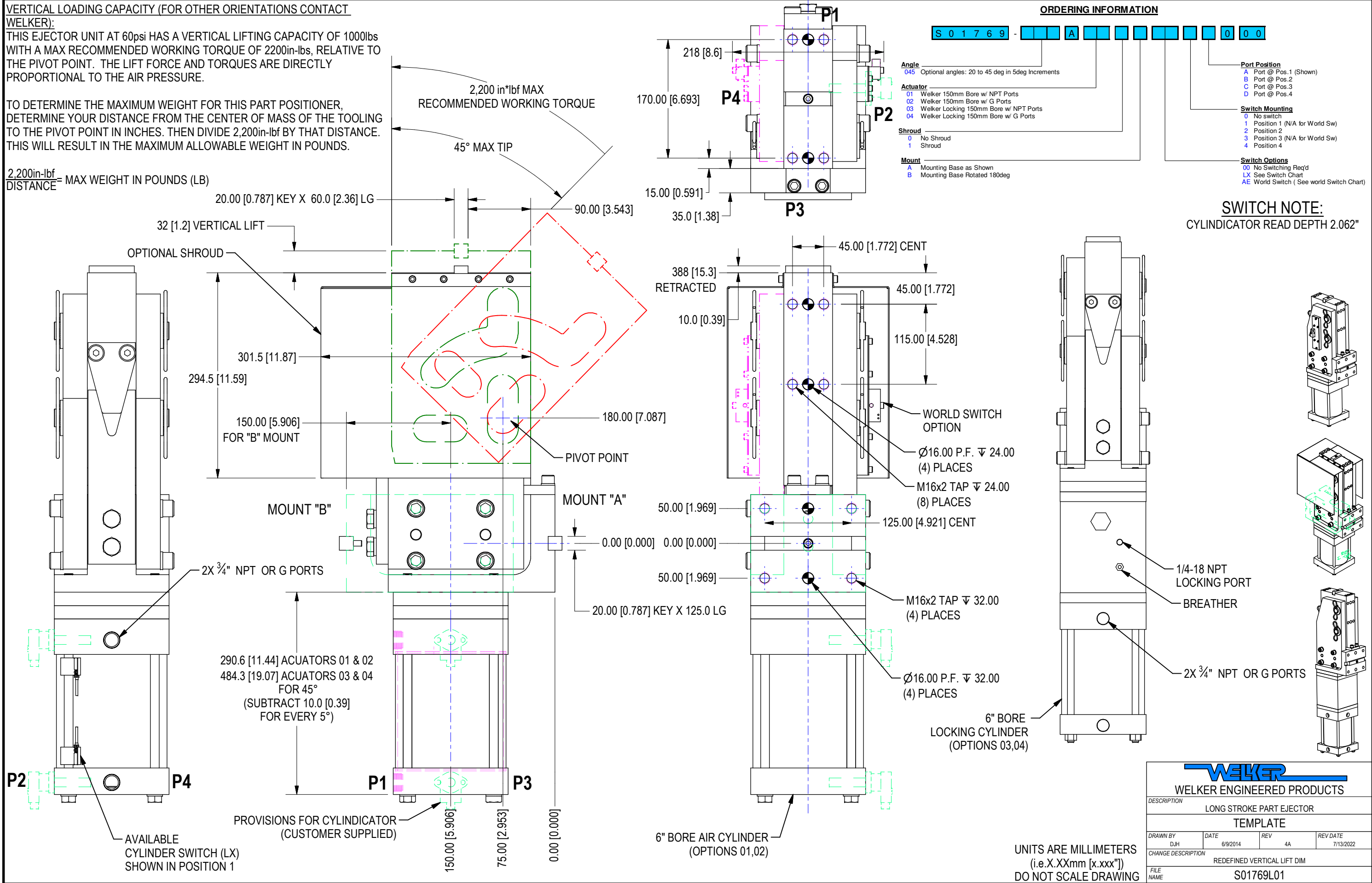


VERTICAL LOADING CAPACITY (FOR OTHER ORIENTATIONS CONTACT WELKER):

THIS EJECTOR UNIT AT 60psi HAS A VERTICAL LIFTING CAPACITY OF 1000lbs WITH A MAX RECOMMENDED WORKING TORQUE OF 2200in-lbs, RELATIVE TO THE PIVOT POINT. THE LIFT FORCE AND TORQUES ARE DIRECTLY PROPORTIONAL TO THE AIR PRESSURE.

TO DETERMINE THE MAXIMUM WEIGHT FOR THIS PART POSITIONER, DETERMINE YOUR DISTANCE FROM THE CENTER OF MASS OF THE TOOLING TO THE PIVOT POINT IN INCHES. THEN DIVIDE 2,200in-lbf BY THAT DISTANCE. THIS WILL RESULT IN THE MAXIMUM ALLOWABLE WEIGHT IN POUNDS.

$$\frac{2,200\text{in-lbf}}{\text{DISTANCE}} = \text{MAX WEIGHT IN POUNDS (LB)}$$



WORLD SWITCHES			
Order Number SO1 (E)XTEND or SO1 (R)ETRACT	Part Number	Manufacturer	Description All switches are Quick Disconnect
99	Switch Ready		Customer Supplied Switch
ZE or ZR	WWS001A	Welker	4-Wire, 4-Pin, DC M12x1 (PNP)
Non-stocked switches (effective 1-2-2023):			
AE or AR	Ni2-Q6.5-AP6-0.1-FS 4.4X3/S304	Turck	4-Wire, 4-Pin, DC M12x1 (PNP)
BE or BR	Ni2-Q6.5-ADZ32-0.1-FSB 5.4X4/S304	Turck	4-Wire, 5-Pin, AC/DC 1/2-20(NO)
CE or CR	Ni2-Q6.5-AN6-0.1-FS 4.4X3/S304	Turck	4-Wire, 4-Pin, DC M12x1 (NPN)
DE or DR	NBN2-F581-100S6-E8-V1	Pepperl&Fuchs	4-Wire, 4-Pin, DC M12x1 (PNP)
EE or ER	BES-Z02KR2-PSC20F-P100-S04-V	Balluff	3-Wire, 4-Pin, DC M12x1 (PNP)
HE or HR	Ni2-Q6.5-0.1-BDS-2AP6X3-H1141/S34	Turck	4-Wire, 4-Pin, DC M12x1 (PNP)
JE or JR	IN5374	Efector	3-Wire, 4-Pin, DC M12x1 (PNP)
CYLINDER SWITCHES			
L3	SWITCH L3 ~ Weld field immune, comparable to World Switches*	Welker	4-Wire, 4-Pin, DC M12x1 (PNP)
L5	MK5113 (single sensor switch: 2 switches are installed per cylinder)	ifm Efector	3-Wire, 4-Pin, DC M12x1 (NPN)
Standard Switch Option - All other options may affect price and delivery			

*Note that some mid and low frequency DC resistance applications (i.e. aluminum resistance welding applications) may cause a fault. In these applications, it is recommended that the sensor be ignored/bypassed during the welding cycle.