



Tube Clamp

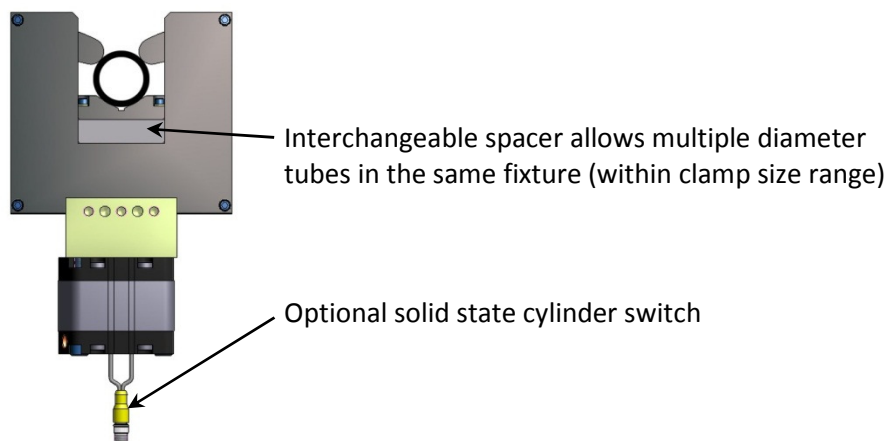
Narrow back-up and clamp for holding tubing, centers tube securely from both sides.
Allows more weld access than traditional modified clamps.

- *Compact design available in 3 sizes:*
 - 1-2" tube diameter
 - 2-3" tube diameter
 - 3-4" tube diameter
- *Pre-hardened clamp arms for durable operation*
- *Pneumatic cylinder with multiple port positions for easy plumbing and installation*
- *Optional solid state cylinder switch*



Applications:

Exhaust systems
Seating
Furniture/chair manufacturing
Tube machining



ORDERING INFORMATION

S 0 1 4 8 9 - X X X X A 1 A 3 0 L 0 A

Pin Diameter

XXXX Tube Diameter (i.e. 30.00mm Tube = 3000)
(19.00-50.80 Diameter Range)

Actuator

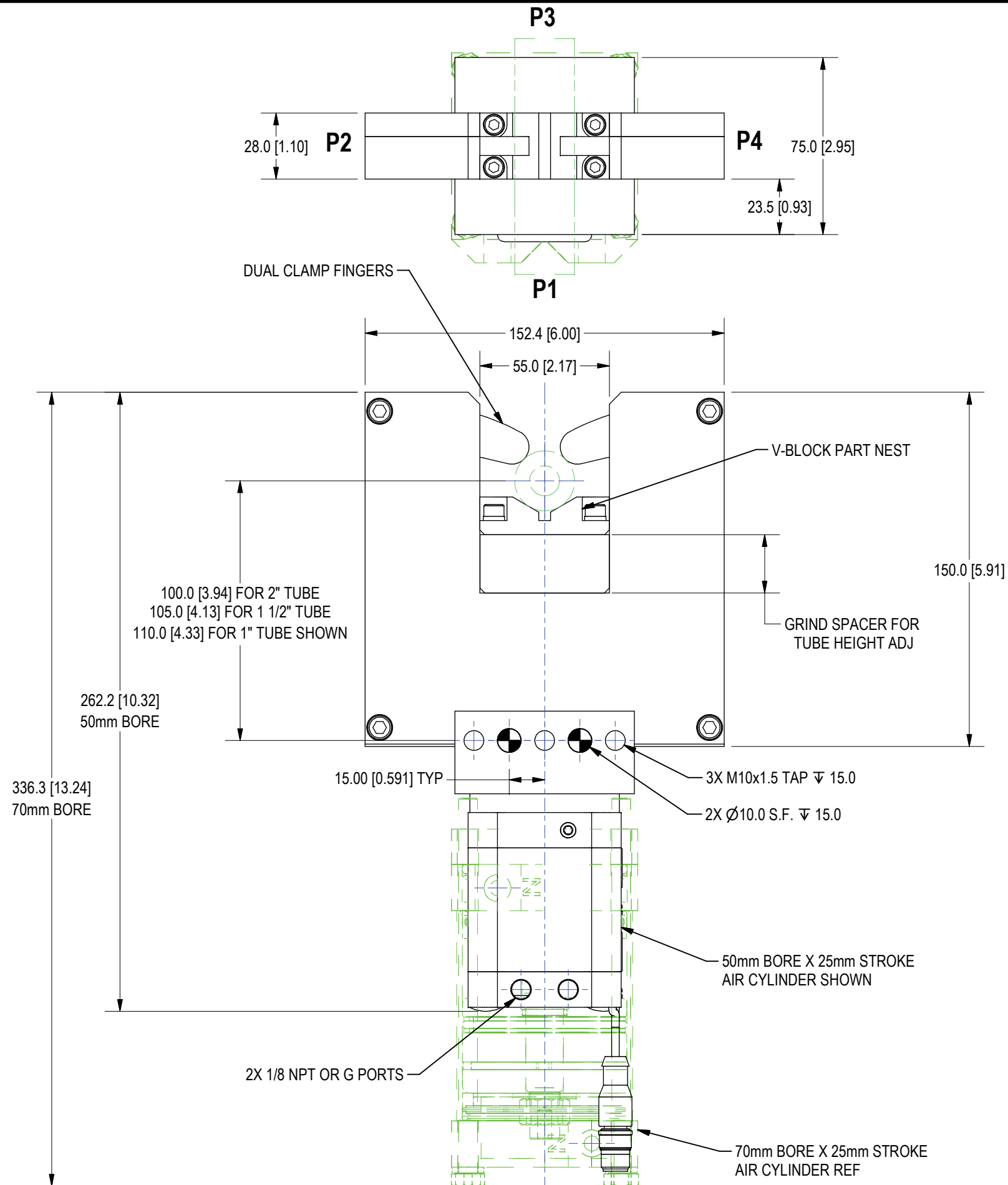
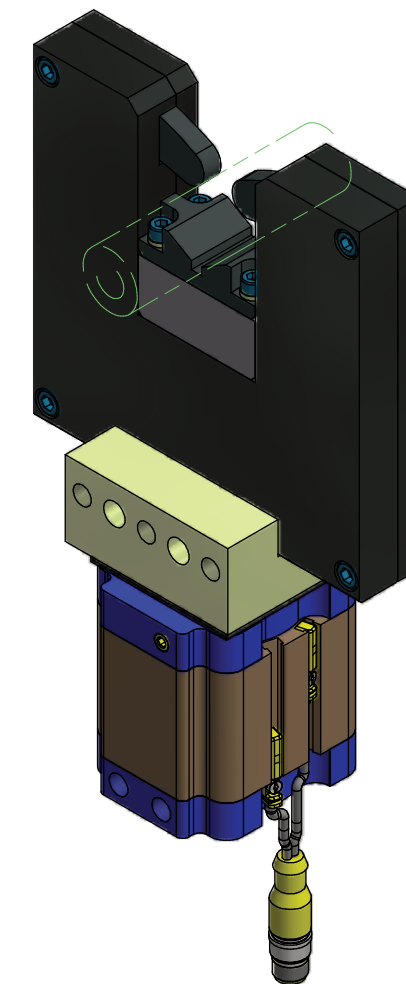
- 30 50mm Bore Cylinder w/ NPT Ports
- 31 50mm Bore Cylinder w/ G Ports
- 32 70mm Bore Cylinder w/ NPT Ports
- 33 70mm Bore Cylinder w/ G Ports

Switch

- 00 No Switch
- L0 Welker Cylinder Switch

Port Position

- A P1 Position (Shown)
- B P2 Position
- C P3 Position
- D P4 Position



UNITS ARE MILLIMETERS
(i.e.X.XXmm [x.xxx"])
DO NOT SCALE DRAWING

DATE	STATUS	DRAWN BY	DATE	CHK'D BY	ENG APPROVAL
3/13/2018	Released	DJH	1/13/2012	AMD	
SCALE		HALF		FILE NAME	S01489L01

WELKER BEARING COMPANY					
TOOL NAME WELKER TUBE CLAMP					
TEMPLATE					
DATE					
STATUS					
DRAWN BY					
DATE					
CHK'D BY					
ENG APPROVAL					
FILE NAME					
S01489L01					

ORDERING INFORMATION

S 0 1 6 6 2 - X X X X A 1 A

Tube Diameter
 XXXX Tube Diameter (i.e. 60.00mm Tube = 6000)
 (50.00-76.20 Diameter Range)

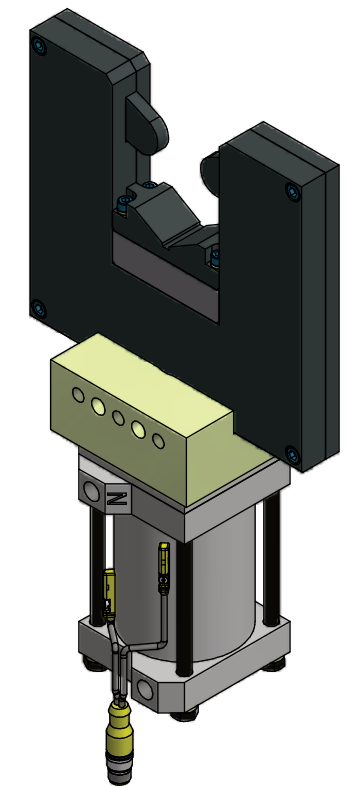
Actuator
 30 70mm Bore Cylinder Single Rod w/ NPT Ports
 31 70mm Bore Cylinder Single Rod w/ G Ports
 32 70mm Bore Cylinder Double Rod w/ NPT Ports
 33 70mm Bore Cylinder Double Rod w/ G Ports

Switch
 00 No Switch
 LX L3,L5 - See Welker Cylinder Switch Chart

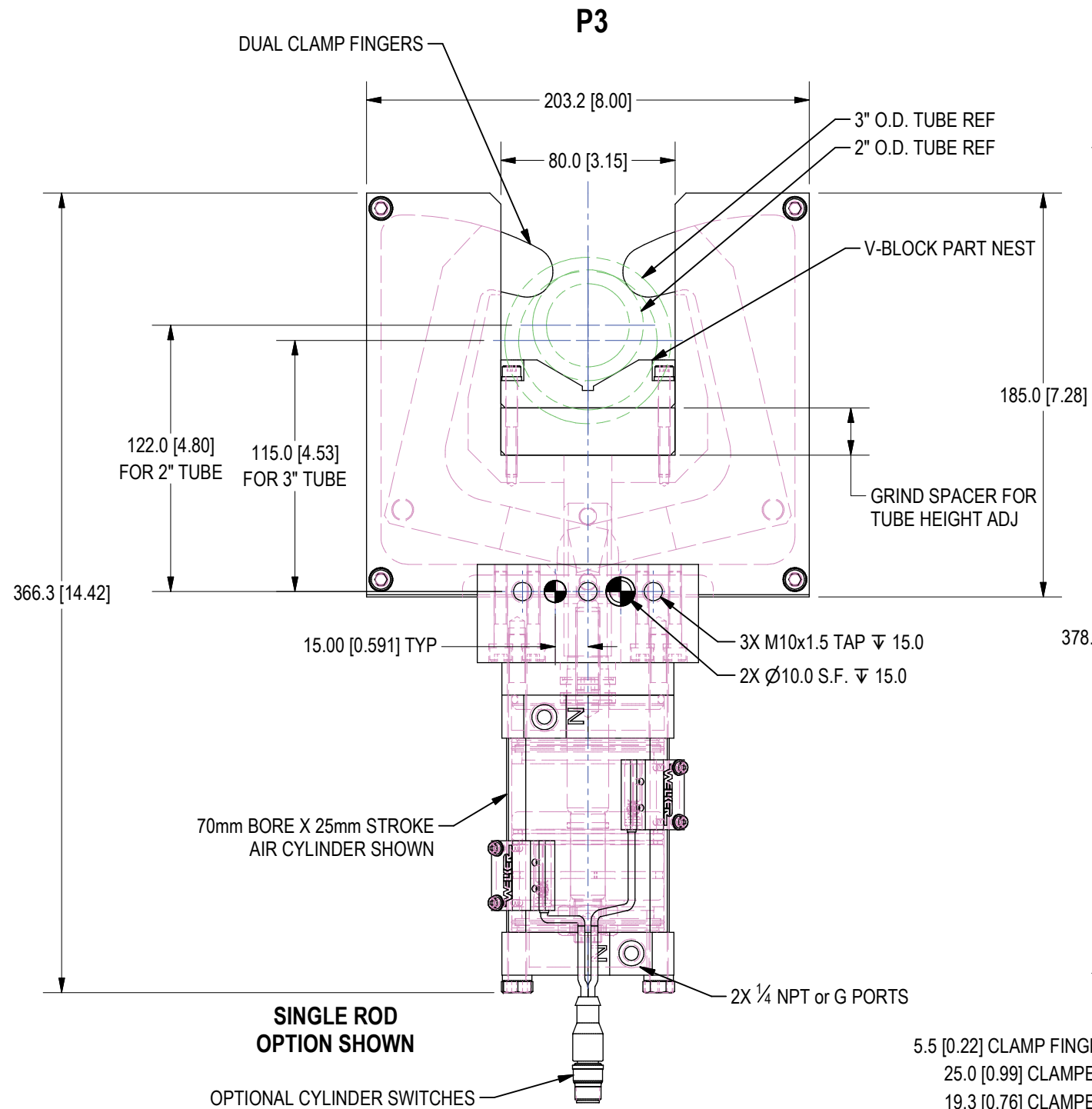
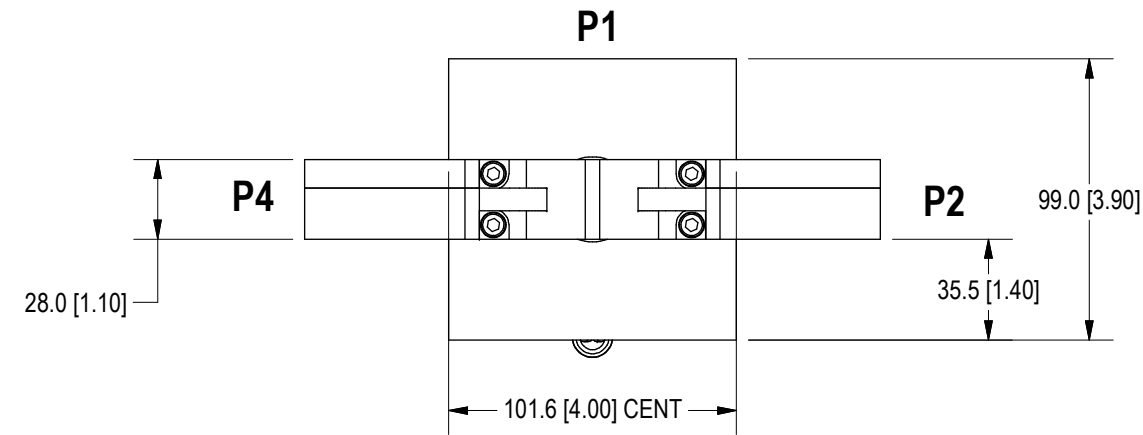
Port Position
 A P1 Position (Shown)
 B P2 Position
 C P3 Position
 D P4 Position

APPROVAL

APPROVED:
 AS NOTED:
 BY: _____
 DATE: _____



DOUBLE ROD OPTION SHOWN



5.5 [0.22] CLAMP FINGERS RETRACTED
 25.0 [0.99] CLAMPED 2.00" TUBE
 19.3 [0.76] CLAMPED 3.00" TUBE
 25.5 [1.00]
 3/4-16 UNF THREAD
 Ø25.4 [1.00]

UNITS ARE MILLIMETERS
 (i.e.X.XXmm [x.xxx"])
 DO NOT SCALE DRAWING

DATE	STATUS	DRAWN BY	DATE	CHK'D BY	ENG
12/1/2016	Released	DJH	12/1/2016	AMD	APPROVAL
SCALE		3/8		FILE NAME	
				S01662L01	

WELKER BEARING COMPANY					
TOOL NAME: WELKER TUBE CLAMP					
TEMPLATE					
DRAWN BY	DATE	CHK'D BY	ENG		
DJH	12/1/2016	AMD	APPROVAL		
SCALE		3/8		FILE NAME	
				S01662L01	