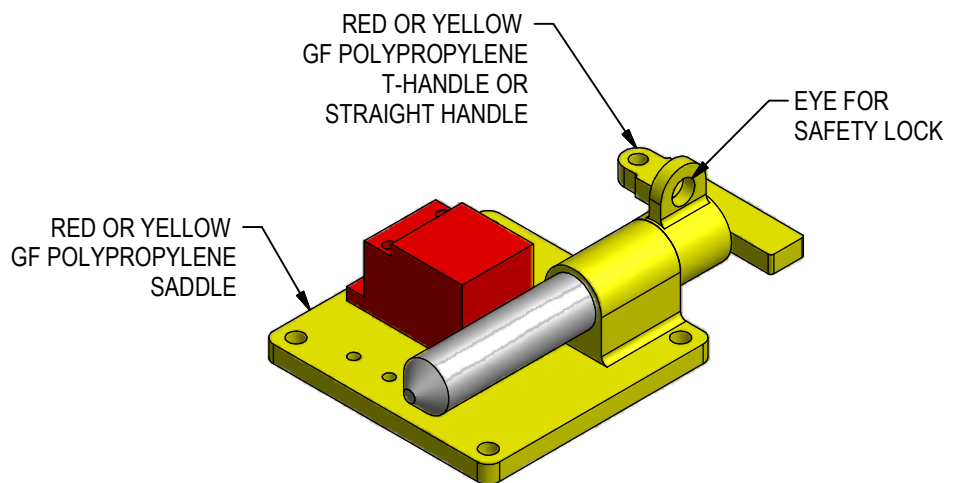
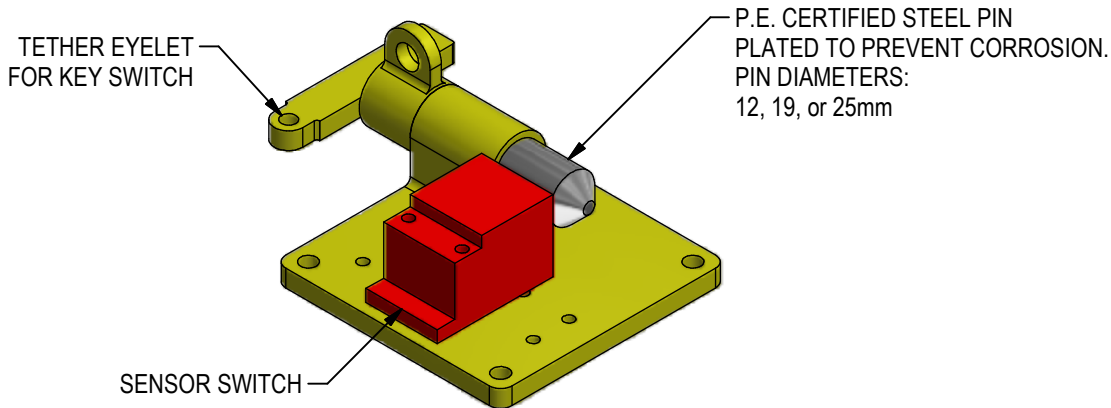


TRU-LOK-OUT ASSEMBLY

NAAMS COMPATIBLE



APPLICATIONS

MAINTENANCE LOCKOUT

SAFETY LOCKOUT

HOMING PIN

RELEASED 5/12/16

ORDERING INFORMATION

NOTE: ALL BOXES MUST BE FILLED IN FOR A COMPLETE PART NUMBER

S	P							0	0		
---	---	--	--	--	--	--	--	---	---	--	--

Pin Diameter

- 12** 12mm or 1/2" Dia
- 19** 19mm or 3/4" Dia.
- 25** 25mm or 1" Dia.

Saddle Color*

- Y** Yellow
- R** Red

Length of Engagement

- 075** 075, 100, 125, 150, 175, 200, 225, 250

Handle Style

- T** T-Handle
- S** Straight

Handle Color*

- Y** Yellow
- R** Red

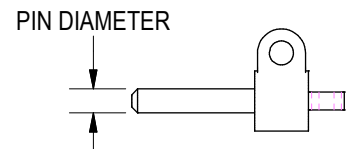
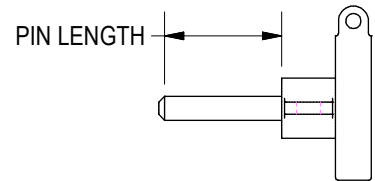
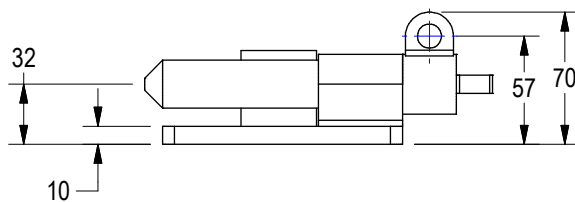
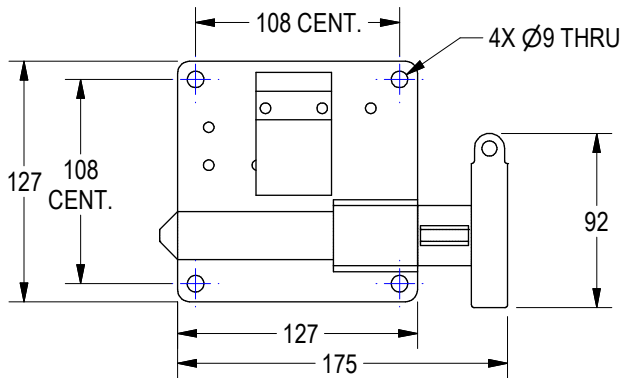
Switch

- 000** No Switch
- 200** Pepperl & Fuchs Cube Switch #NBB20-L3M-A2-C3-V1 [GM]
- 201** Turck Cube Switch #1627297 [FCA, Ford]

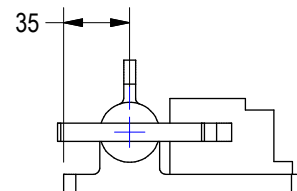
* SPEC COLORS:

FCA: YELLOW SADDLE, YELLOW T-HANDLE
 FORD: YELLOW SADDLE, YELLOW T-HANDLE
 GM: YELLOW SADDLE, RED T-HANDLE

GENERAL DIMENSIONS



MATERIAL	4140 PHT, Rc 33
YIELD	95000
SHEAR YIELD	55100



(DO NOT SCALE DRAWING)

WELKER
 ENGINEERED PRODUCTS
 800-229-0890 www.welkerproducts.com

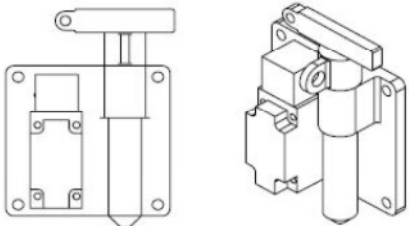
LOAD INFORMATION

Rated loads assume that the gap between the lockout blocks and receiver have negligible gap and does not induce any moment load. It also assumes that the lockout hold diameter is within 1.00mm of the diameter of the pin. If more than a reasonable gap is present, or the clearance hole is too large, then the rated load is reduced. All applications should be evaluated.

LOCKOUT PINS: SINGLE SHEAR			
DIA. (mm)	DIA. (in)	AREA (in ²)	RATED LOAD (lbf)
12	0.472	0.175	1000
19	0.748	0.439	2000
25	0.984	0.761	4000

LOCKOUT PINS: DOUBLE SHEAR			
DIA. (mm)	DIA. (in)	AREA (in ²)	RATED LOAD (lbf)
12	0.472	0.175	2000
19	0.748	0.439	4000
25	0.984	0.761	8000

LEGACY KEYED SWITCHES

			
Code	Manufacturer	Part Number	Contacts
100	Honeywell	GKEA06L	2NC
101	Allen Bradley	440K-M2NANYC	2NC
102	Honeywell	GKBA14LX	2NC+2NO
103	Euchner	NZ1VZ5285C	1NC + 1NO
104	Euchner	NZ1VZ5385C	2NC
105	Honeywell	GKBA2P6-F12	2NC + 1NO
106	Allen Bradley	440K-M22AEYT	2NC + 1NO
107	Banner	SI-LM40MKHFXLY	2NC + 1NO
108	Euchner	NZ1VZ-3131EC1972	2NC + 1NO
109	Telemecanique	XCSAREQ3653	2NC + 1NO
110	Allen Bradley	440K-MT55038	

(DO NOT SCALE DRAWING)


 ENGINEERED PRODUCTS
 800-229-0890 www.welkerproducts.com