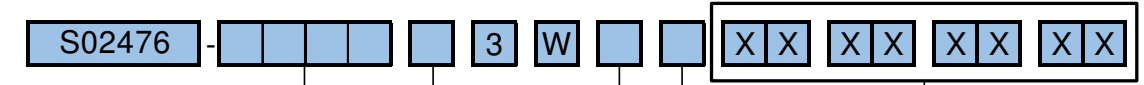


**ORDERING INFORMATION**



**Stroke**  
 0080 0080-1520 (0080 shown)  
 (In 80mm increments)

**Switch Dog Location**  
 J Switch Dogs RH Side (shown)  
 K Switch Dogs LH Side

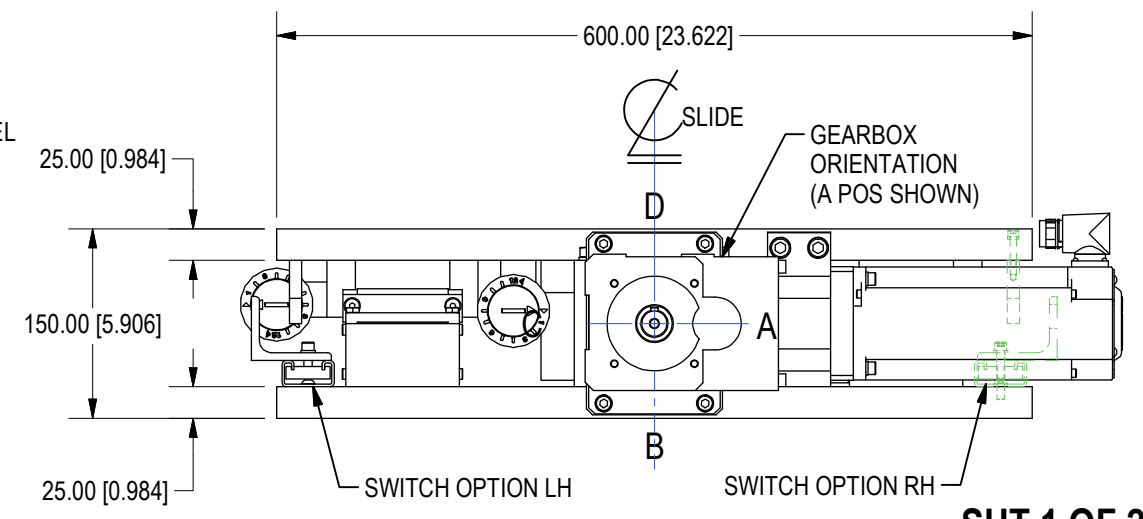
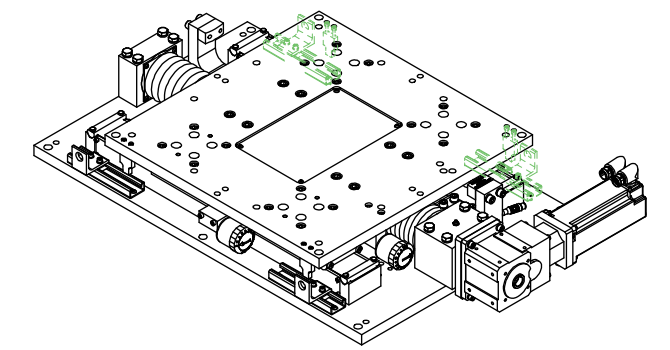
**Gearbox Orientation**  
 A RH side of slide (shown)  
 B Bottom of slide  
 C LH side of slide  
 D Top of slide

**FOR WELKER INTERNAL USE ONLY**  
 Welker slide worksheet must be filled out by Welker sales representative for finalization of ordering callout number

**Motor Orientation**  
 1 Top of slide (shown)  
 2 Facing away from homing switch  
 3 Bottom of slide  
 4 Facing towards homing switch

RATED FOR HORIZONTAL APPLICATIONS  
 LOADS UP TO 1000lbs (453.5kg) @ 14in/sec (355mm)  
 FOR OFFSET LOADING INFORMATION  
 PLEASE REFER TO THE NL3 SLIDE CATALOG

\*\*25MM OF OVER TRAVEL INCLUDED IN STROKE  
 CALLOUT FOR EACH END



**APPROVAL**  
 APPROVED:   
 AS NOTED:   
 BY: \_\_\_\_\_  
 DATE: \_\_\_\_\_

VIEW Z  
 (SEE SHT 2)

MOTOR  
 ORIENTATION  
 (POS 1 SHOWN)

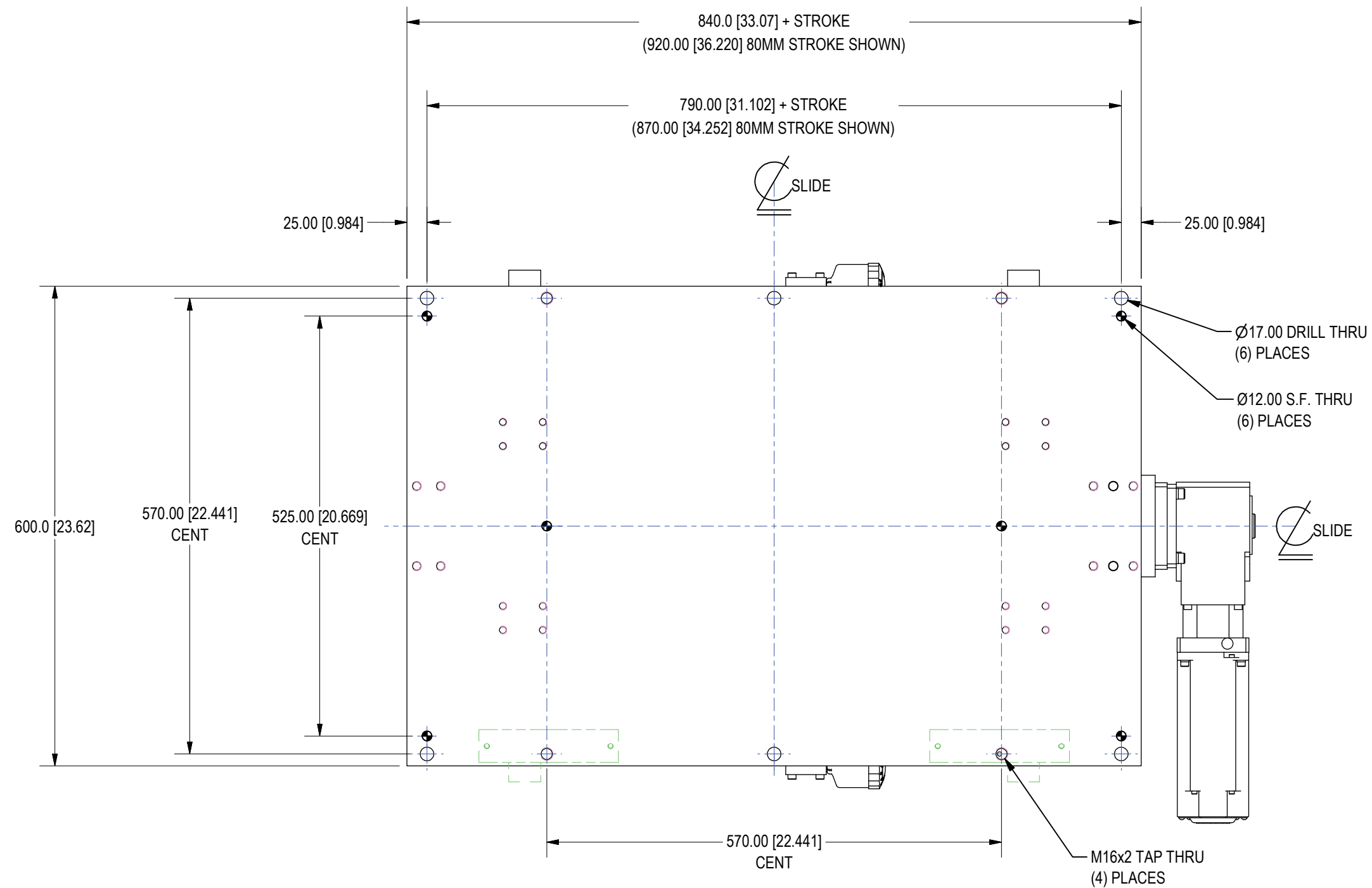
UNITS ARE MILLIMETERS  
 (i.e.X.XXmm [x.xxx"])  
 DO NOT SCALE DRAWING

SHT 1 OF 2



TOOL NAME					
ELECTRIC SERVO SLIDE					
TEMPLATE					
DRAWN BY	DATE	CHK'D BY	AMD	ENG	APPROVAL
KPL	1/20/2017				
SCALE	NONE	FILE	NAME	S02476L01	

DATE	STATUS
1/27/2017	Released



VIEW Z  
(FROM SHT 1)

**APPROVAL**

APPROVED:

AS NOTED:

BY: \_\_\_\_\_

DATE: \_\_\_\_\_

**SHT 2 OF 2**



UNITS ARE MILLIMETERS  
(i.e.X.XXmm [x.xxx"])  
DO NOT SCALE DRAWING

TOOL NAME					
ELECTRIC SERVO SLIDE					
TEMPLATE					
DRAWN BY	DATE	CHK'D BY	DATE	ENG	APPROVAL
KPL	1/20/2017	AMD			
SCALE	NONE	FILE NAME	S02476L01		