

ORDERING INFORMATION

S 0 2 3 4 5 - [] [] [] [] [] [] [] [] [] [] [] [] 0 0 0

Stroke
100 100-200mm Stroke (25mm Increments)

Coupler
A Rap (not available with stop options)
B Rigid

Actuator
01 Pneumatic - Single Rod - NPT
02 Pneumatic - Single Rod - G Port
03 Pneumatic - Double Rod - NPT Port
04 Pneumatic - Double Rod - G Port

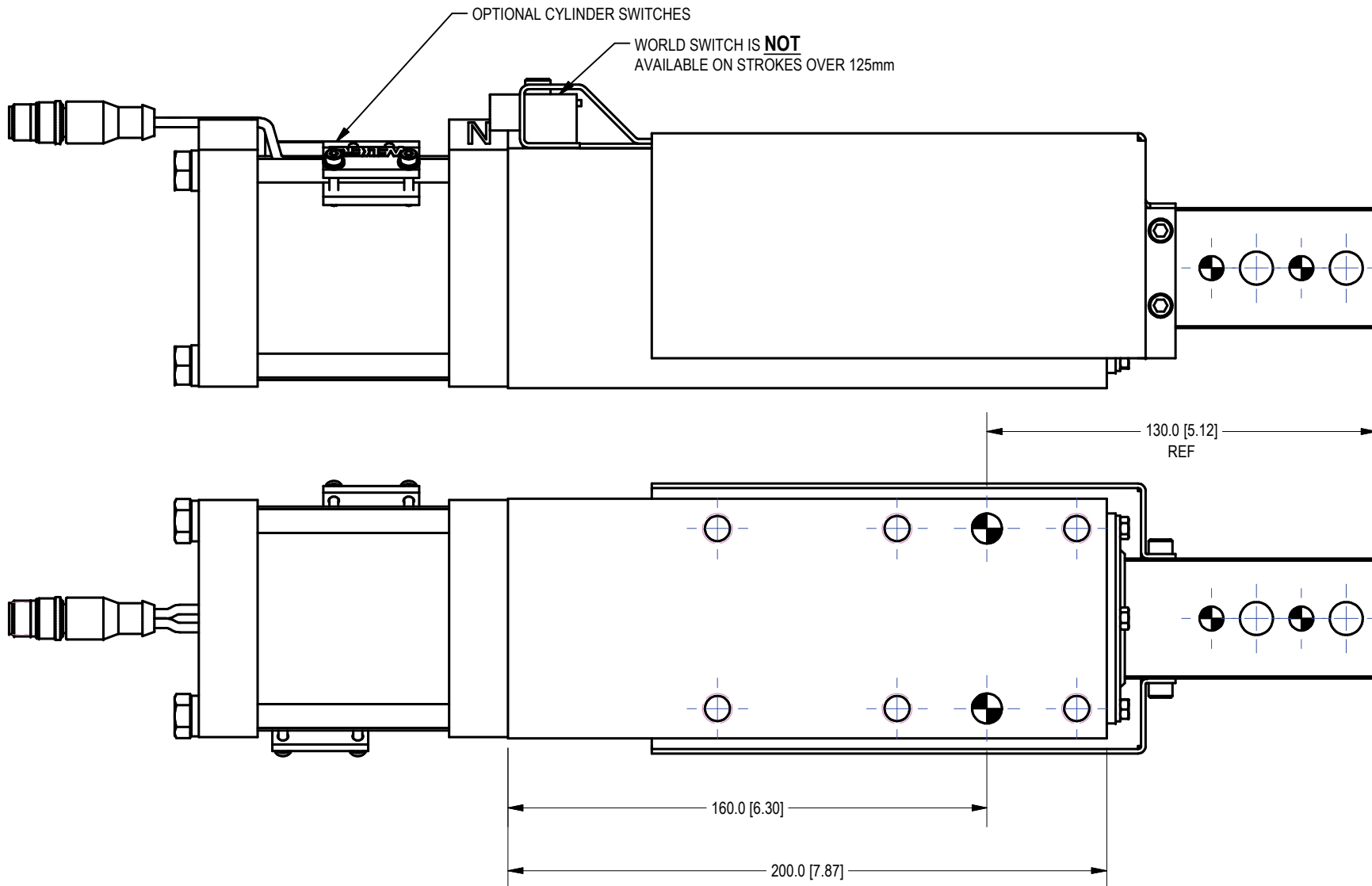
Options
0 None
E Extend Stop - Req's Actuator option 03 or 04
F Extend Stop - 10mm Extra Stop - Req's Actuator option 03 or 04
G Fixed Extend Stop - Req's Actuator option 03 or 04
M Loose Fit Body for Manual Use
P Loose Fit Body w Palm Button - Req's Actuator option 03 or 04
S Loose Fit Body w Extend Stop ("E") - Req's Actuator option 03 or 04
T Loose Fit Body w Fixed Stop ("G") - Req's Actuator option 03 or 04

Port Position
A P1 Port Position (Shown)
B P2 Port Position
C P3 Port Position
D P4 Port Position

Shroud
0 No Shroud
1 Shroud

Switch
00 No Switch
ZE World Switch-See Switch Chart
L3 Cylinder Switch-See Switch Cha

Ram Style
L See Shotpin Catalog for Options



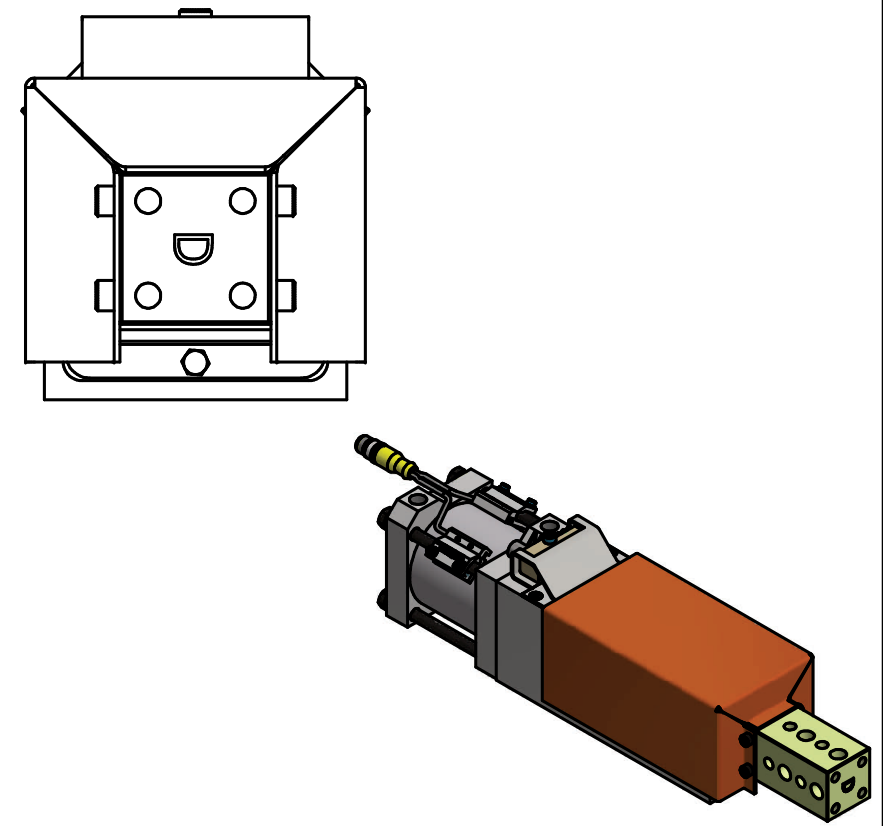
WORLD SWITCHES UP TO 125mm STROKE	Order Number	Manufacturer's Part Number	Mfr.	Description
	SO1 EXTEND / SO1 RETRACT			All switches are quick disconnect
SE / SR		Ni2-Q6.5-AP6-0.16-FS 4.4X3/S304	Turck	4-Wire, 4-Pin, DC M12 X 1 (PNP)
TE / TR		Ni2-Q6.5-ADZ32-0.16-FSB 5.4X4/S304	Turck	4-Wire, 5-Pin, AC/DC 1/2-20 (N.O.)
UE / UR		Ni2-Q6.5-AN6-0.16-FS 4.4X3/S304	Turck	3-Wire, 4-Pin, DC M12 X 1 (NPN)
VE / VR		NBN2-F581-160S6-EB-V1	Pepperl & Fuchs	4-Wire, 4-Pin, DC M12 X 1 (PNP)
WE / WR		BES-Z02KR2-FSC20F-P165-S04-V	Balluff	3-Wire, 4-Pin, DC M12 X 1 (PNP)
YE / YR		IN5375	Efector	3-Wire, 4-Pin, DC M12 X 1 (PNP)
ZE / ZR		WWS001A	Welker	4-Wire, 4-Pin, DC M12 X 1 (PNP)
CYLINDER SWITCHES	L3	SWITCH L3 ~ Dual sensor, single connector switch	Welker	4-Wire, 4-Pin, DC (PNP) M12 X 1
	L5	MK5113 ~ Single sensor, single connector switch: 2 switches installed on cylinder	ifm Efector	3-Wire, 4-Pin, DC (NPN) M12 X 1

Standard Switch Option - All other options may affect price and delivery

FOR ALL OTHER DIMENSIONS & OPTIONS, SEE UB4N CATALOG

Application note:

This is a non-standard long-stroke UB4 series shot pin. Standard UB4 application loading parameters do not apply. Recommended tooling weight not to exceed 2.25kg[5.0lbm] and be mounted within 120mm[4.7in.] in any direction from centerline and end of ram. External side loads should be kept below 80N[18lbf]. Deflection and repeatability will exceed standard UB4 specifications.



UNITS ARE MILLIMETERS
(i.e. X.XXmm [x.xxx"])
DO NOT SCALE DRAWING

WELKER ENGINEERED PRODUCTS					
TOOL NAME UB4N SHOTPIN ASSEMBLY					
TEMPLATE					
DATE	REV	DRAWN BY	DATE	CHK'D BY	ENG APPROVAL
3/26/2021	4	DJH	3/6/2017	KPL	
SCALE		HALF		FILE NAME	S02345L01