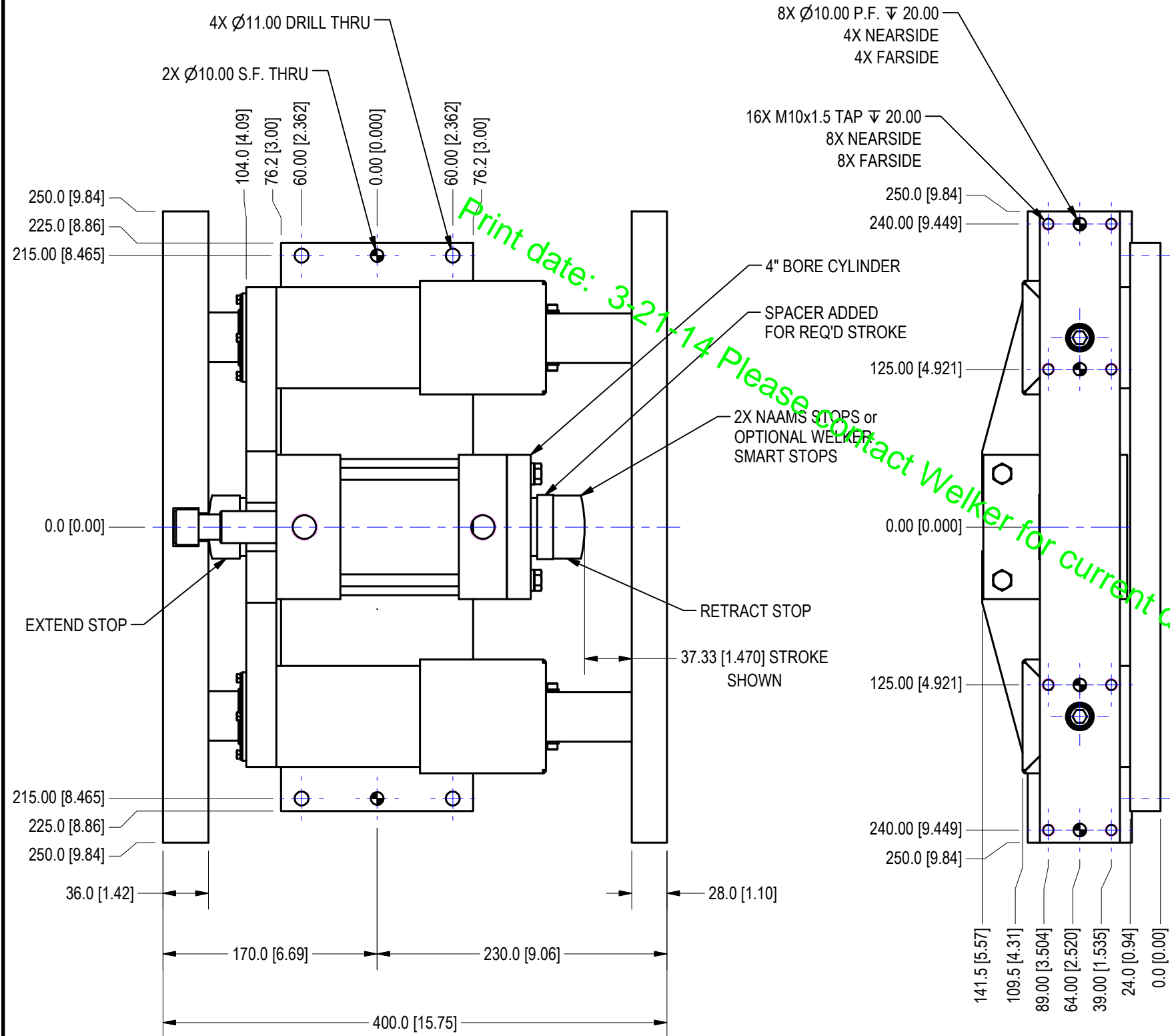
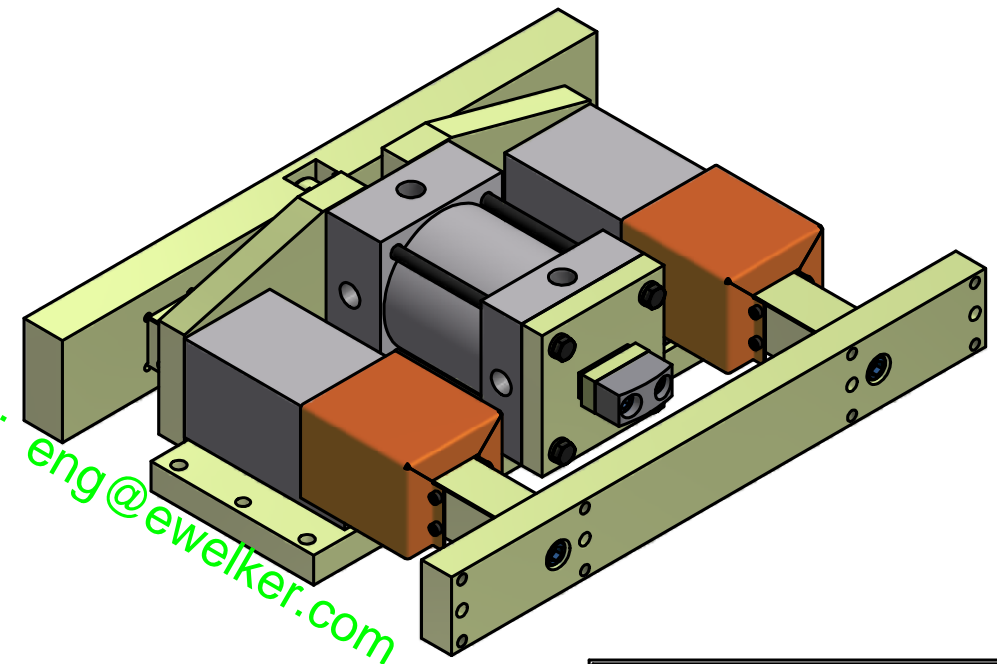


ORDERING INFORMATION

S 0 1 7 8 1 - 0 5 0 B 0 2 S P 1 P X 1 Z Z Z Z

- Coupler**
 A Flap (shortens nominal stroke by 2mm)
 B Rigid
- Actuator**
 01 NPT Ports
 02 G Ports
- Switch**
 00 No Switch
 P1 Welker Smart Stops
- Precision**
 X Normal
 P High Precision
- Shroud**
 0 No Shroud
 1 Shroud
- Spacer**
 ZZZ Extend = 0.00, Retract = 12.67

INCLUDE "ZZZZ = EXTEND 0.00, RETRACT = 12.67"
 IN THE ORDER INFORMATION



**37.33 USABLE STROKE
 SLIDE SHOWN IN EXTENDED POSITION**

APPROX WT: #147 LBS

Print date: 3-21-14 Please Contact Welker for current drawing: eng@ewelker.com

APPROVAL

APPROVED:

AS NOTED:

BY: _____

DATE: _____

UNITS ARE MILLIMETERS
 (i.e.X.XXmm [x.xxx"])
 DO NOT SCALE DRAWING

WELKER BEARING COMPANY					
TOOL NAME: GUIDED SLIDE					
TEMPLATE					
DATE	STATUS	DRAWN BY	DATE	CHK'D BY	ENG APPROVAL
2/14/2014	Released	DJH	2/14/2014	GSK	
SCALE: 1/4		FILE NAME: S01781L01			