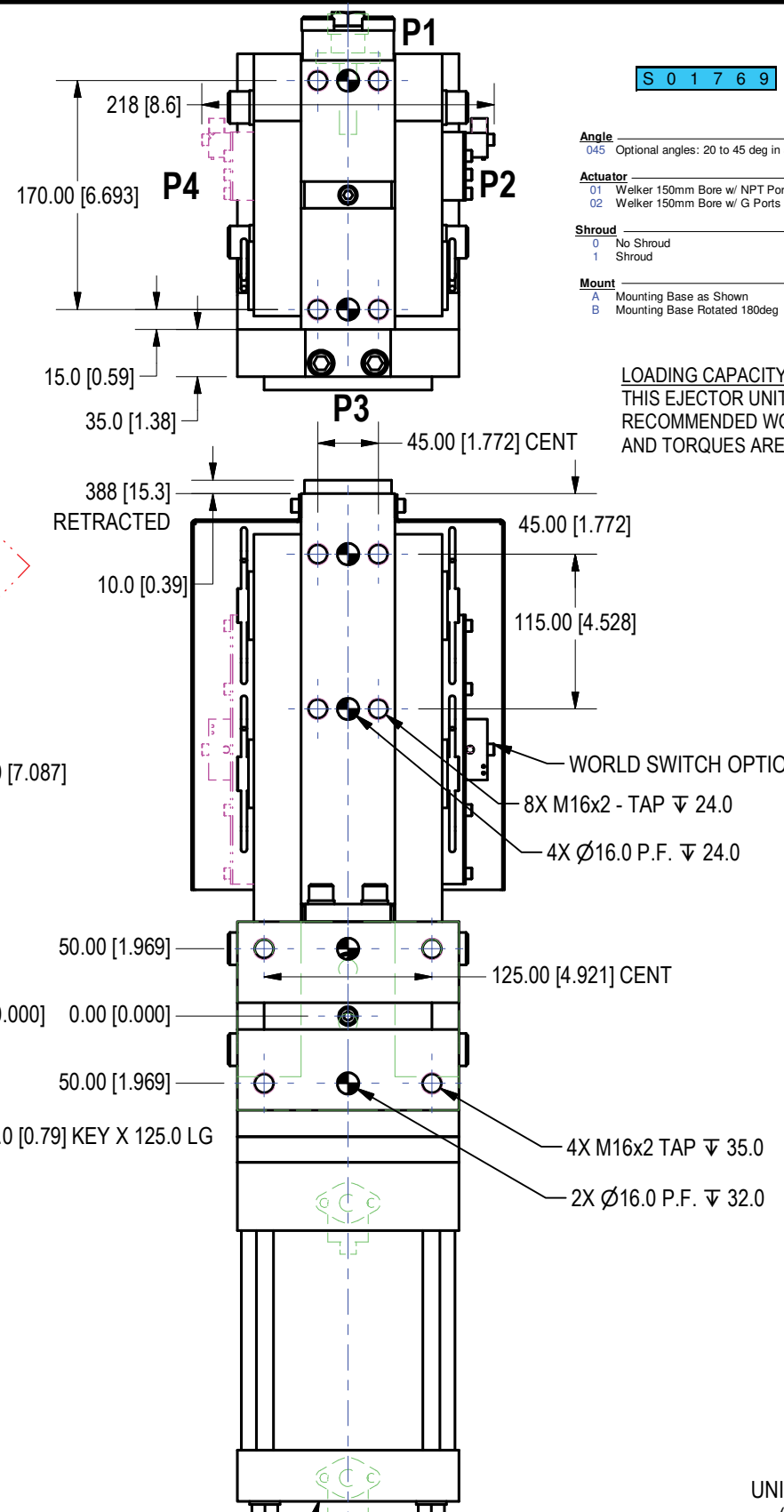
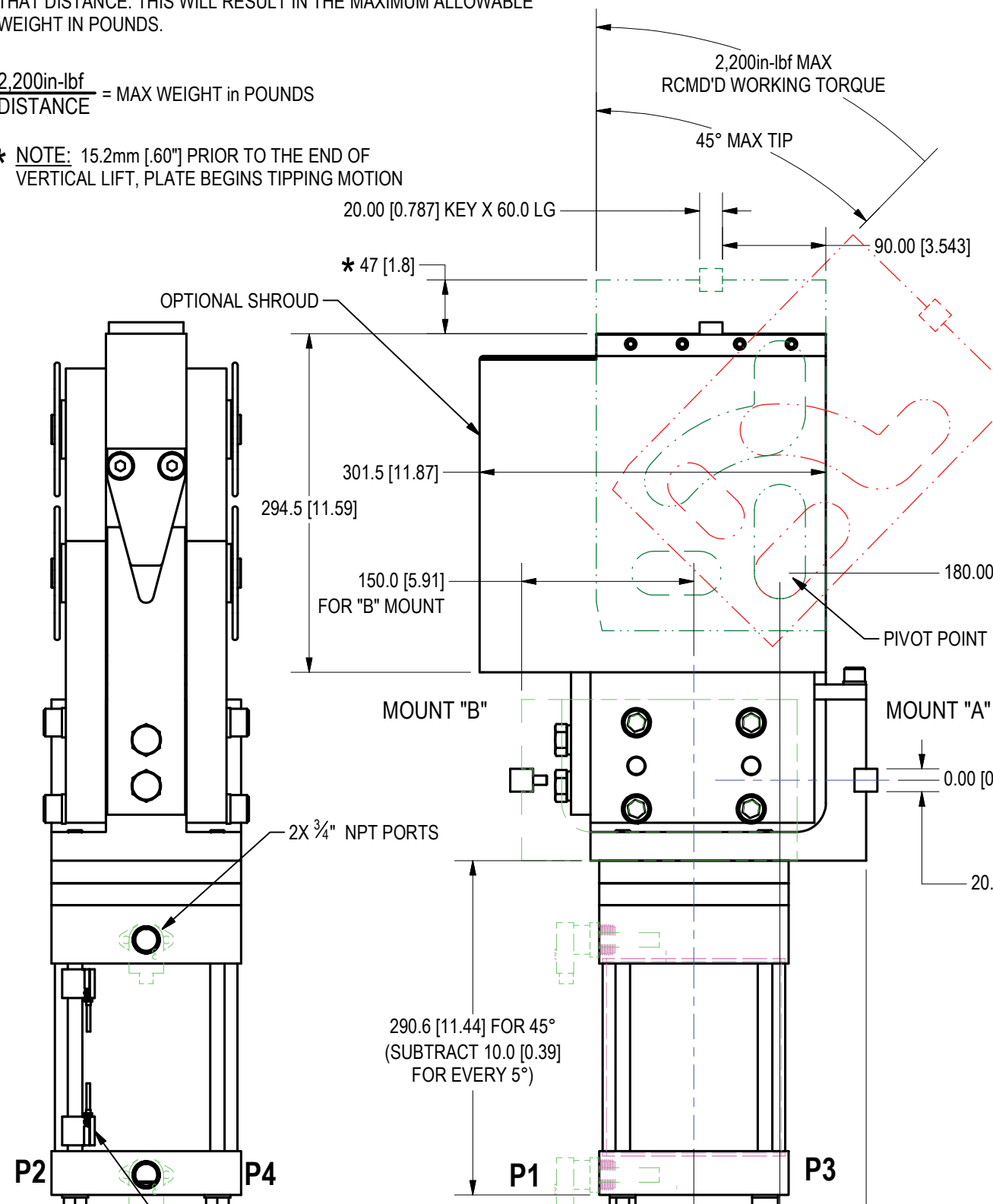


TO DETERMINE THE MAXIMUM WEIGHT FOR THIS PART POSITIONER, DETERMINE YOUR DISTANCE FROM THE CENTER OF MASS OF THE TOOLING TO THE PIVOT POINT IN INCHES. THEN DIVIDE 2,200in-lbf BY THAT DISTANCE. THIS WILL RESULT IN THE MAXIMUM ALLOWABLE WEIGHT IN POUNDS.

$$\frac{2,200\text{in-lbf}}{\text{DISTANCE}} = \text{MAX WEIGHT in POUNDS}$$

* NOTE: 15.2mm [.60"] PRIOR TO THE END OF VERTICAL LIFT, PLATE BEGINS TIPPING MOTION



ORDERING INFORMATION

S 0 1 7 6 9 A

Angle: 045 Optional angles: 20 to 45 deg in 5deg Increments

Actuator:
01 Welker 150mm Bore w/ NPT Ports
02 Welker 150mm Bore w/ G Ports

Shroud:
0 No Shroud
1 Shroud

Mount:
A Mounting Base as Shown
B Mounting Base Rotated 180deg

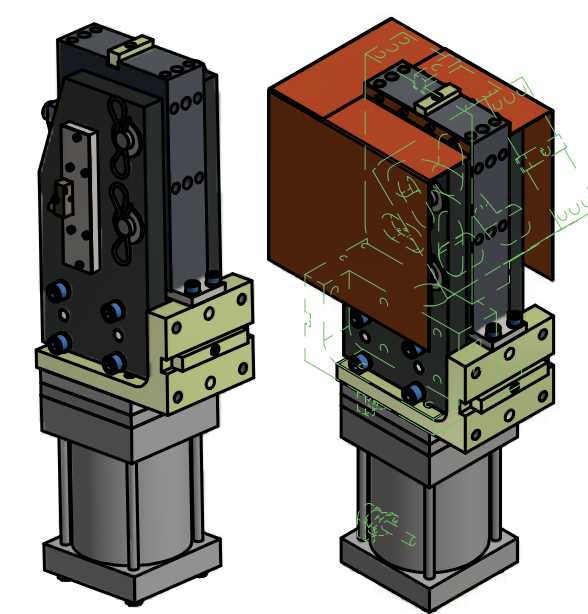
Port Position:
A Port @ Pos.1 (Shown)
B Port @ Pos.2
C Port @ Pos.3
D Port @ Pos.4

Switch Mounting:
0 No switch
1 Position 1 (N/A for World Sw)
2 Position 2
3 Position 3 (N/A for World Sw)
4 Position 4

Switch Options:
00 No Switching Req'd
LX See Switch Chart
AE World Switch (See world Switch Chart)

LOADING CAPACITY:
THIS EJECTOR UNIT AT 60psi HAS A VERTICAL LIFTING CAPACITY OF 1000lbs WITH A MAX RECOMMENDED WORKING TORQUE OF 2200in-lbs, RELATIVE TO THE PIVOT POINT. THE LIFT FORCE AND TORQUES ARE DIRECTLY PROPORTIONAL TO THE AIR PRESSURE.

SWITCH NOTE:
CYLINDRICATOR READ DEPTH 2.062"



UNITS ARE MILLIMETERS (i.e.X.XXmm [x.xxx"])
DO NOT SCALE DRAWING

EXCEPT AS NOTED DECIMAL TOL SHALL BE:
0 PLACE (FRACTIONS) ± .400 [1/64"]
1 PLACE ± .200 [0.010"]
2 PLACE ± .100 [0.005"]
3 PLACE ± .010 [0.0005"]
ALL DOWEL LOC± 0.010[0.0005"] BETWEEN HOLES

EXCEPT AS NOTED, MAXIMUM ALLOWABLE ROUGHNESS SHALL BE:
1 PLACE FINISH 6 MICRONS (250 MICROINCHES)
2 PLACE FINISH 3 MICRONS (125 MICROINCHES)
3 PLACE FINISH 1.6 MICRONS (63 MICROINCHES)

REV	REV BY	REV DATE	CHK BY	DESCRIPTION
3	DJH	2/14/2017	GSK	ADDED MOUNTING POSITION OPTION FOR LX SWITCH

WEKER BEARING COMPANY			
TOOL NAME LONG STROKE PART EJECTOR			
DRAWN BY	DATE	LAST EDIT BY	ENG APPROVAL
DJH	6/2/2017	DJH	
SHEET	OF	FILE NAME	
1	3		
SCALE			S01769L01
1/5			

WORLD SWITCHES	S01 Sensor Position - "E"xtended "R"etracted		Manufacturer's Part Number	Mfr.	Description
	A	E or R	Ni2-Q6.5-AP6-0.1-FS 4.4X3/S304	Turck	3-Wire, 4-Pin, DC M12 X 1 (PNP) Quick Disconnect
	B	E or R	Ni2-Q6.5-ADZ32-0.1-FSB 5.4X4/S304	Turck	4-Wire, 5-Pin, AC/DC 1/2-20 (N.O.) Quick Disconnect
	C	E or R	NI2-Q6.5-AN6-0.1-FS 4.4X3/S304	Turck	3-Wire, 4-Pin, DC M12 X 1 (NPN) Quick Disconnect
	D	E or R	NBN2-F581-100S6-E8-V1	Pepperl & Fuchs	3-Wire, 4-Pin, DC M12 X 1 (PNP) Quick Disconnect
	E	E or R	BES-Z02KR2-PSC20F-P100-S04-V	Balluff	3-Wire, 4-Pin, DC M12 X 1 (PNP) Quick Disconnect
	H	E or R	Ni2-Q6.5-0.1M-BDS-2AP6X3-H1141/S34	Turck	3-Wire, 4-Pin, DC M12 X 1 (PNP) Quick Disconnect
	J	E or R	IN5374	Efector	4-Wire, 4-Pin, DC M12 X 1 (PNP) Quick Disconnect
CYLINDER SWITCHES	Switch Option	Manufacturer's Part Number		Mfr.	Description
	L3	SWITCH L3 L3 switch is weld field immune, comparable to World Switches. L3 is a dual sensor, single connector switch: 1 switch required per cylinder		Welker	4-Wire, 4-Pin, DC (PNP) M12 X 1 Quick Disconnect
	L5	MK5113 Single sensor, single connector switch: 2 switches required per cylinder		ifm Efector	3-Wire, 4-Pin, DC (NPN) M12 X 1 Quick Disconnect

Standard Switch Option - All other options may affect price and delivery