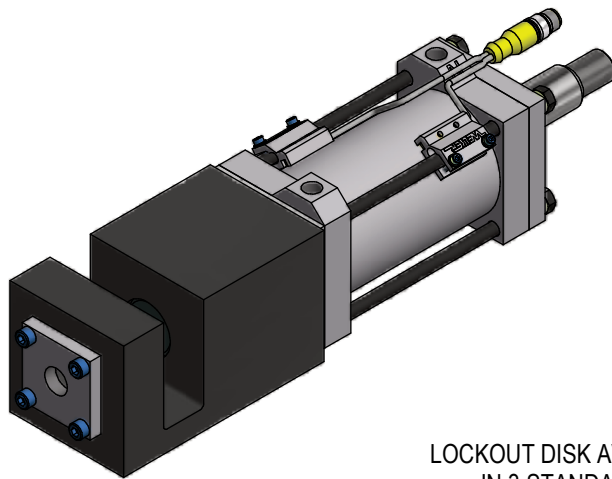


## DS3 DOUBLE SHEAR LOCKOUT UNIT

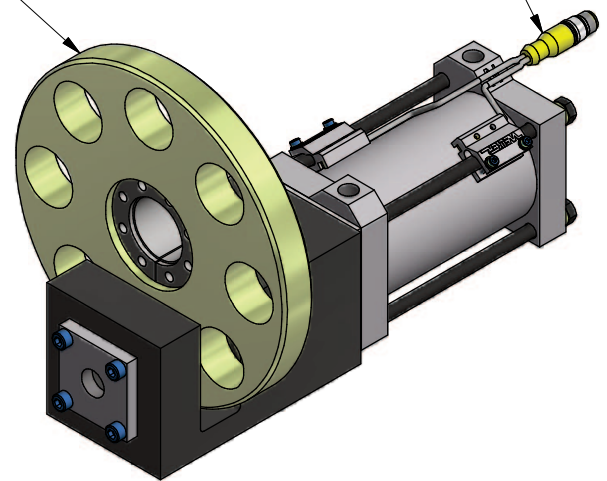


### APPLICATIONS

TRUNNIONS & LINEAR MOTION LOCKOUT

LOCKOUT DISK AVAILABLE  
IN 3 STANDARD SIZES.  
ASK WELKER ABOUT  
CUSTOM SIZES

SOLID STATE  
CYLINDER SWITCH



DOUBLE SHEAR PIN ALLOWS FOR 10,000 LBF.  
SIDE LOAD CAPACITY

SUITABLE FOR AUTOMATIC OR MANUAL  
TOOLING

OPTIONAL SPRING EXTEND FEATURE TO  
GUARANTEE ENGAGEMENT EVEN IN THE  
ABSENCE OF AIR PRESSURE

HIGH STRENGTH MATERIALS WITH CORROSION  
AND WELD SPATTER RESISTANT SURFACE

MAINTENANCE FREE OPERATION

REVISED: 10/17/17

# ORDERING INFORMATION

NOTE: ALL BOXES MUST BE FILLED IN FOR A COMPLETE PART NUMBER

D	S	3	N						0	0
---	---	---	---	--	--	--	--	--	---	---

**Actuator** \_\_\_\_\_

- 30** Welker 70mm Bore w/ NPT ports
- 31** Welker 70mm Bore w/ G ports
- 32** Welker 70mm Bore Dbl Rod w/ NPT ports
- 33** Welker 70mm Bore Dbl Rod w/ G ports

**Spring Extend** \_\_\_\_\_

- 0** No Spring
- E** Spring Extend

**Switch** \_\_\_\_\_

- 00** No Switch
- LX** See Welker Cylinder Switch Chart

**Foot Pedal** \_\_\_\_\_

- X** None
- F** Pneumatic Foot Pedal Valve

	Switch Option	Part Number	Manufacturer	Description
<b>Cylinder Switches</b>	<b>L3</b>	SWITCH L3 L3 sw itch is w eld field immune, comparable to World Sw itches	Welker	4-Wire, 4-Pin, DC (PNP) M12 X 1 Quick Disconnect
	<b>L5</b>	MK5113 (This is a single sensor sw itch: 2 sw itches are installed per cylinder)	ifm Efector	3-Wire, 4-Pin, DC (NPN) M12 X 1 Quick Disconnect

**Standard Switch Option - All other options may affect price and delivery**

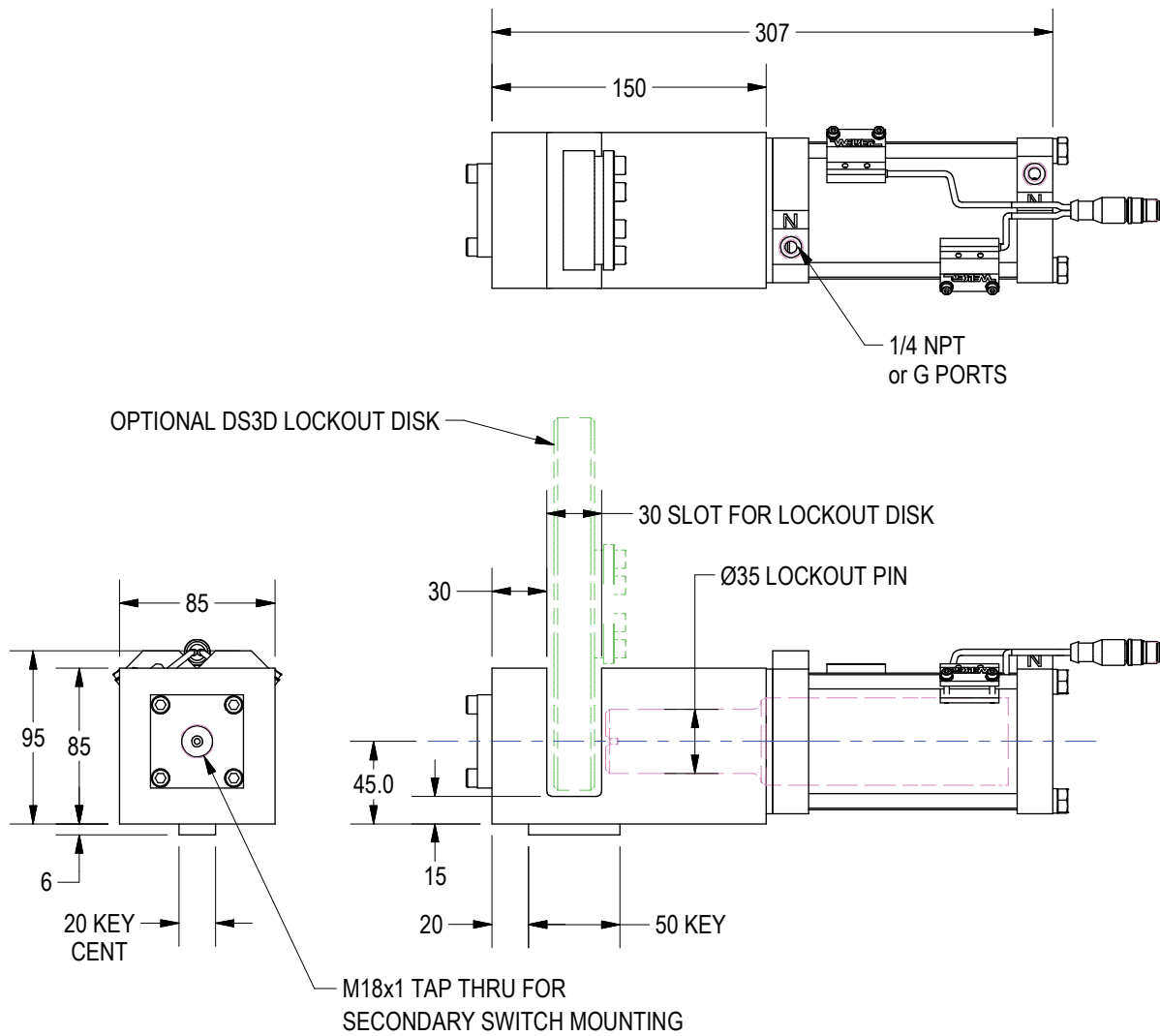
(DO NOT SCALE DRAWING)



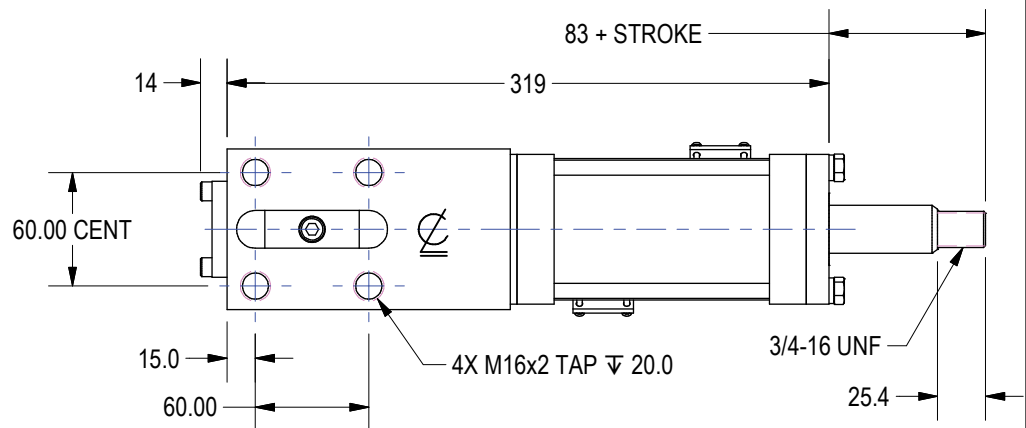
ENGINEERED PRODUCTS

(800) 229-0890 www.welkerproducts.com

# GENERAL DIMENSIONS



## DS3 WITH DOUBLE ROD CYLINDER



(DO NOT SCALE DRAWING)

**WELKER**

ENGINEERED PRODUCTS

(800) 229-0890 www.welkerproducts.com

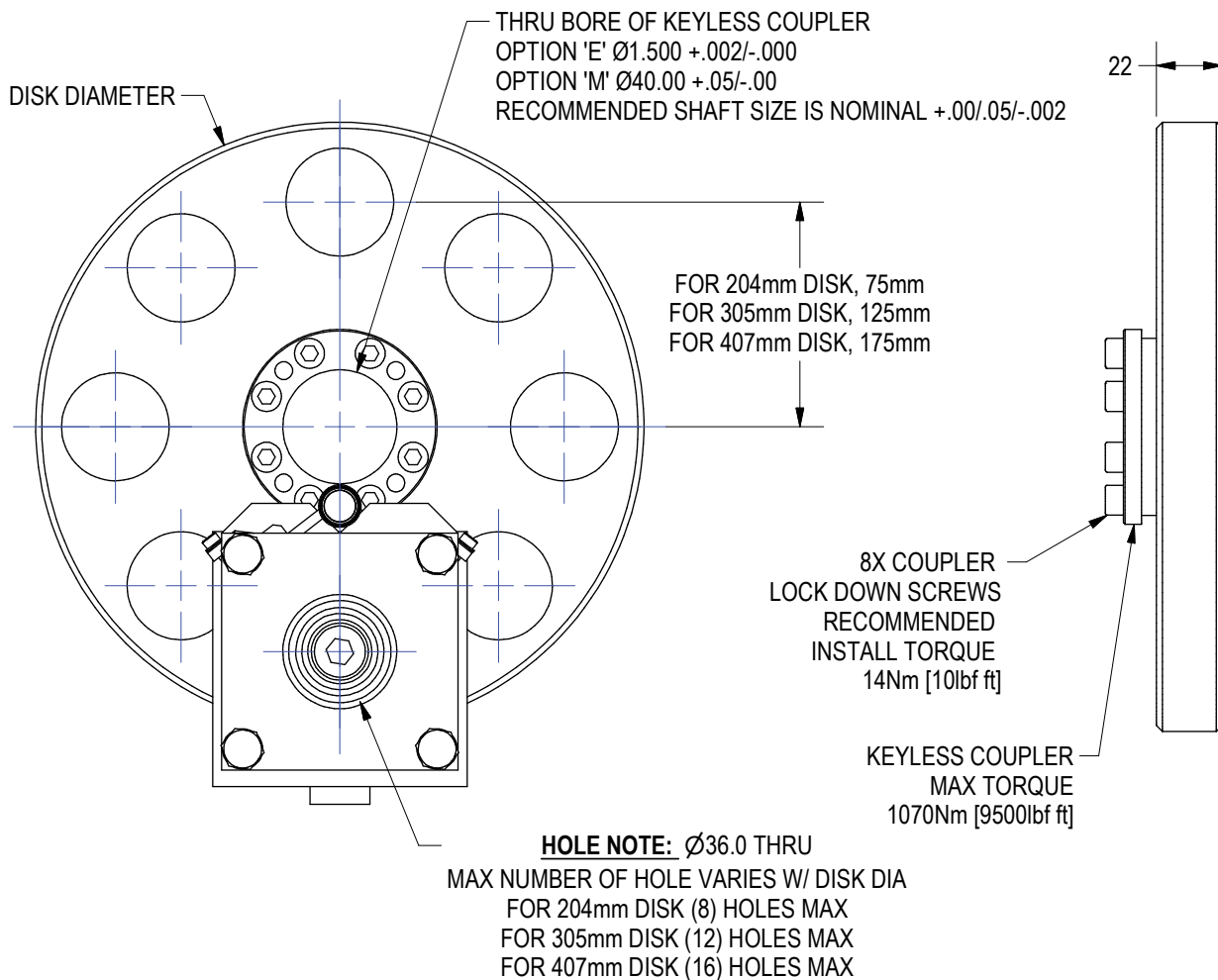
# DISK ORDERING INFORMATION



**Disk Diameter**  
**204** Standard Diameters: 204, 305, 407

**Number of Holes (See Hole Note)**  
**08** Number of Holes are Evenly Spaced About Diameter

**Bore Type**  
**E** English Bore  
**M** Metric Bore



**ASSEMBLY WEIGHTS**  
 204mm DIA w/COUPLER = 9lbf  
 305mm DIA w/COUPLER = 23lbf  
 407mm DIA w/COUPLER = 43lbf

**CONTACT WELKER FOR CUSTOM ASSEMBLIES**

1. SPECIAL HOLE PATTERNS
2. SPECIAL DISK DIAMETERS
3. KEYLESS COUPLER THRU BORE SIZES
4. HIGHER TORQUE CAPACITIES

(DO NOT SCALE DRAWING)



ENGINEERED PRODUCTS

(800) 229-0890 www.welkerproducts.com